

US 63 Location and Environmental Study

Screening to Preferred Alternative - Vienna Section



Legend

- Cemetery
- Historic Place (NRHP)
- Sensitive Biological Resource
- Public Water System Wells
- Sensitive Environmental Constraint
- Sensitive Streams
- Public Land
- Potential Wetlands
- Missouri Department of Conservation
- City Limits
- 100 year Floodplain
- Possible Access Point

- Preferred Alternative
- Alternative 1
- Alternative 2

This alternative was recommended as the preferred for the following reasons:

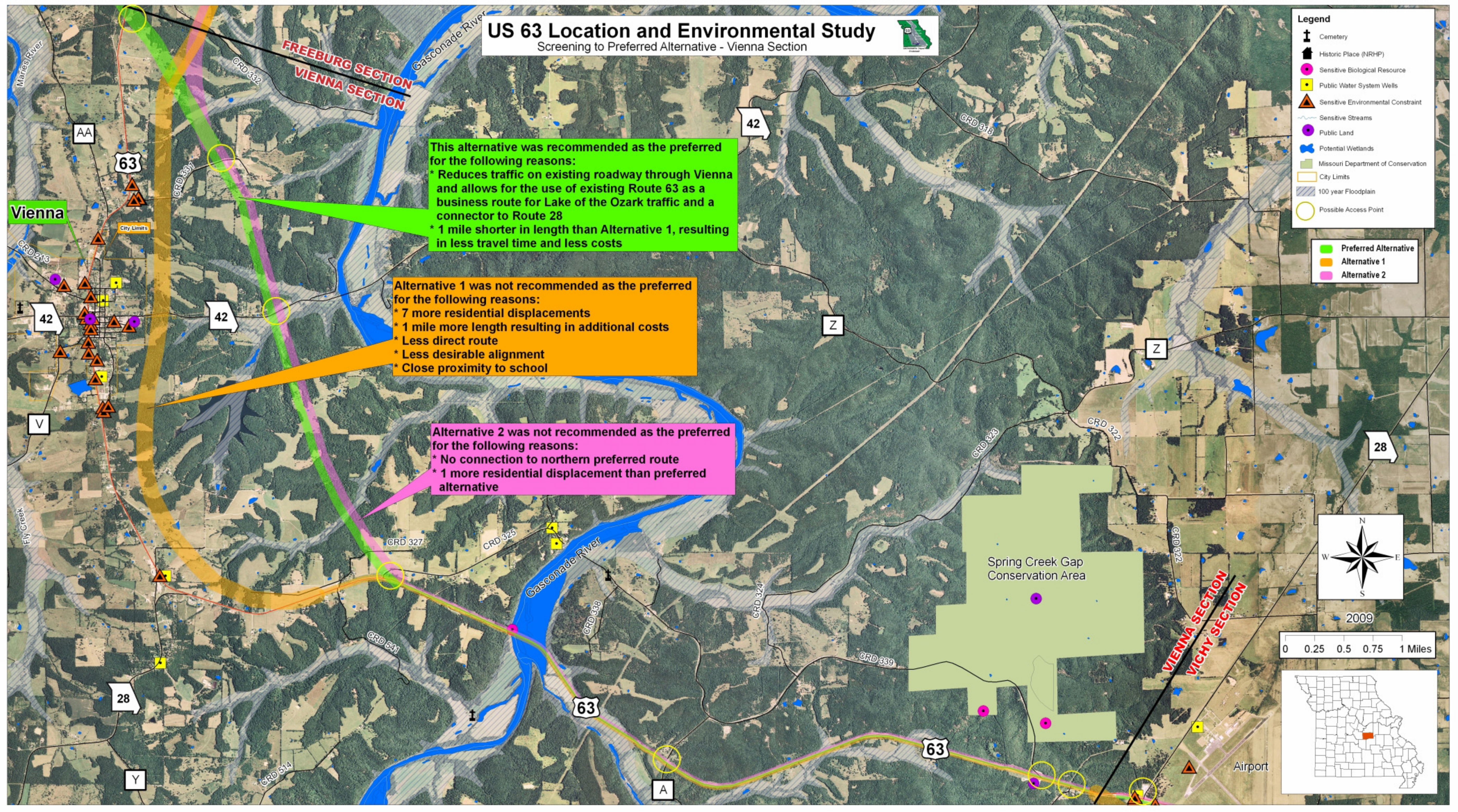
- * Reduces traffic on existing roadway through Vienna and allows for the use of existing Route 63 as a business route for Lake of the Ozark traffic and a connector to Route 28
- * 1 mile shorter in length than Alternative 1, resulting in less travel time and less costs

Alternative 1 was not recommended as the preferred for the following reasons:

- * 7 more residential displacements
- * 1 mile more length resulting in additional costs
- * Less direct route
- * Less desirable alignment
- * Close proximity to school

Alternative 2 was not recommended as the preferred for the following reasons:

- * No connection to northern preferred route
- * 1 more residential displacement than preferred alternative



2009

