

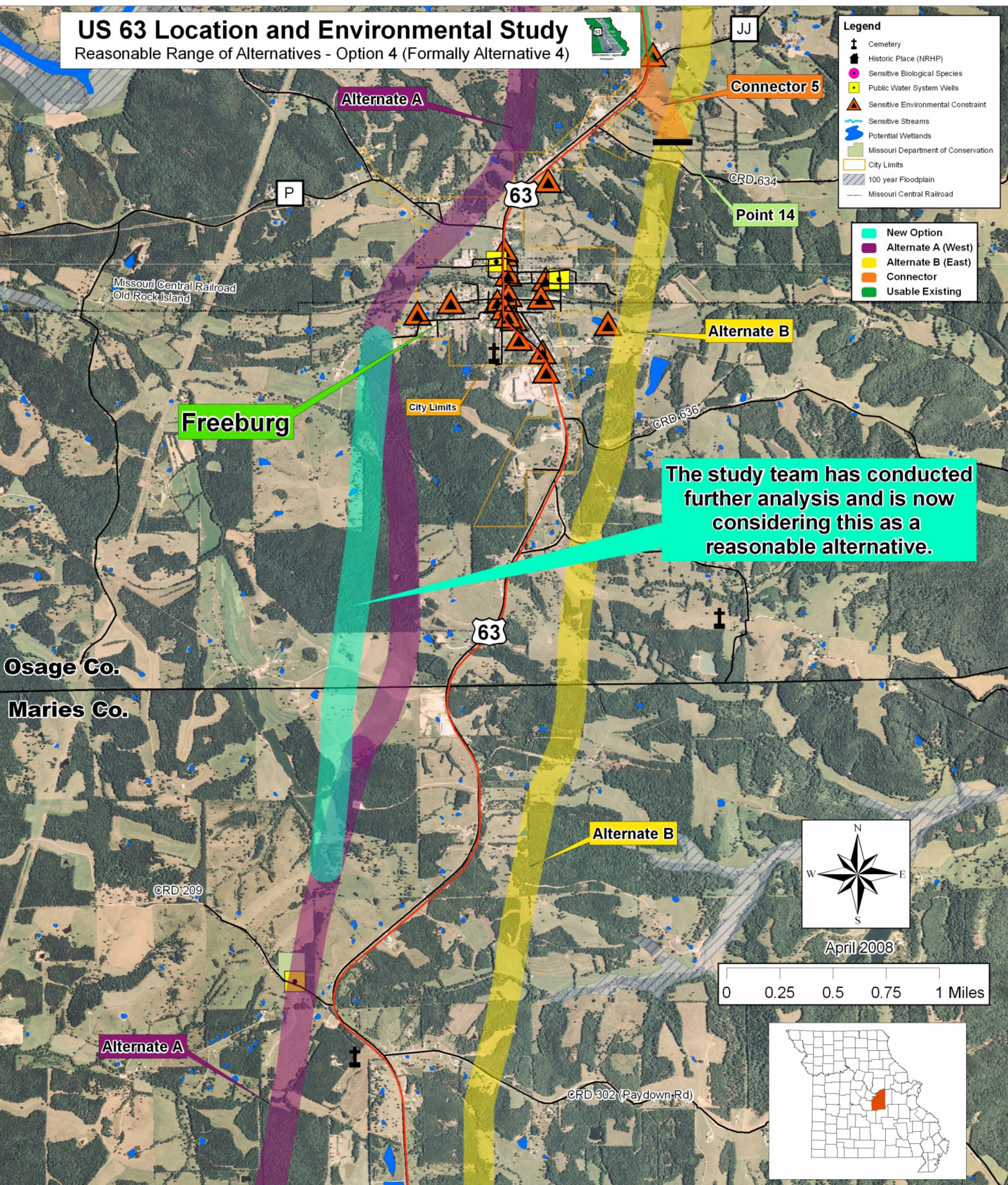
US 63 Location and Environmental Study

Reasonable Range of Alternatives - Option 4 (Formally Alternative 4)



- ### Legend
- Cemetery
 - Historic Place (NRHP)
 - Sensitive Biological Species
 - Public Water System Wells
 - Sensitive Environmental Constraint
 - Sensitive Streams
 - Potential Wetlands
 - Missouri Department of Conservation
 - City Limits
 - 100 year Floodplain
 - Missouri Central Railroad

- New Option
- Alternate A (West)
- Alternate B (East)
- Connector
- Usable Existing



The study team has conducted further analysis and is now considering this as a reasonable alternative.

Osage Co.
Maries Co.



April 2008

