

US 63 Location and Environmental Study

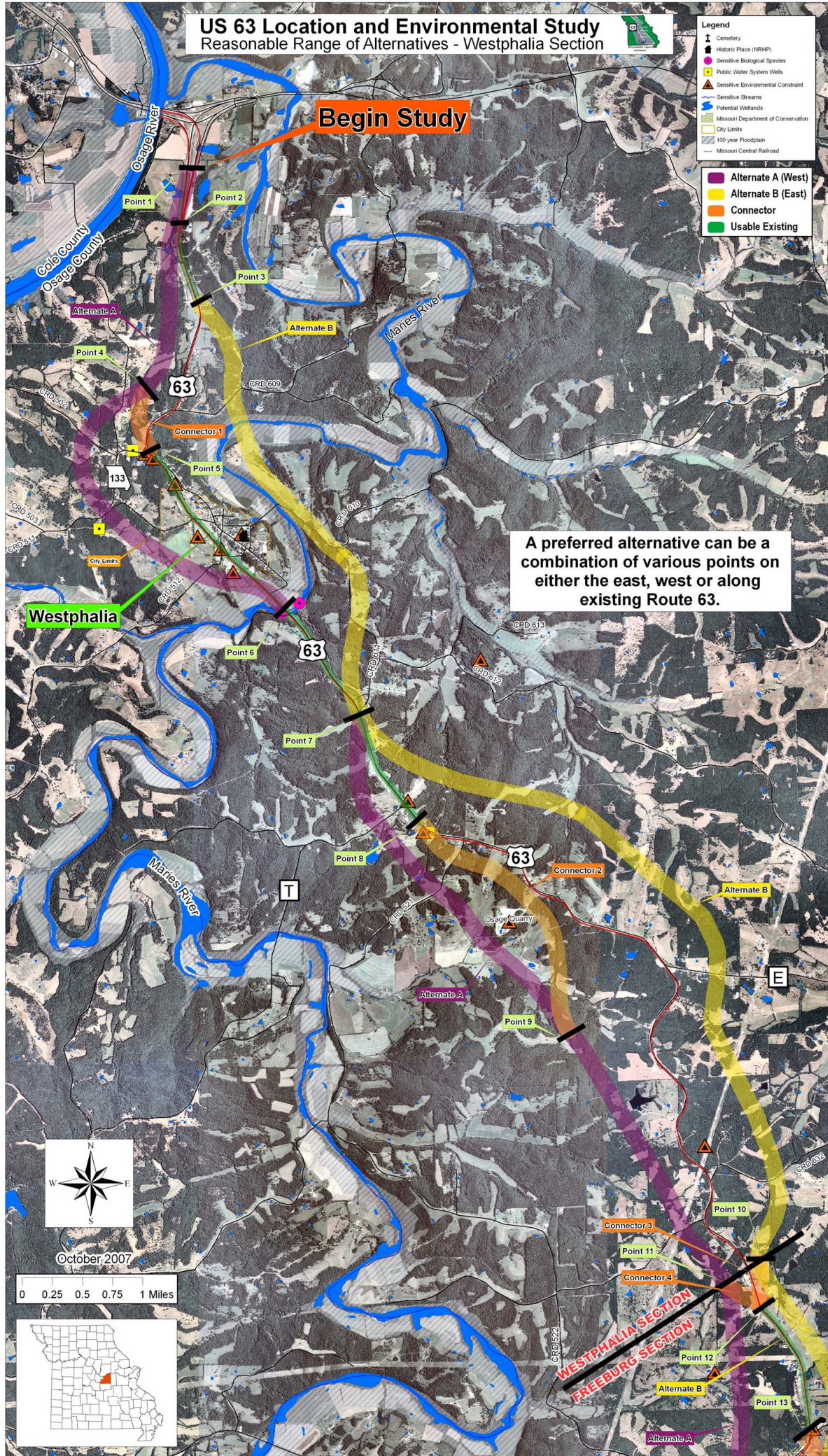
Reasonable Range of Alternatives - Westphalia Section



- Legend**
- Cemetery
 - Historic Place (NRHP)
 - Sensitive Biological Species
 - Public Water System Wells
 - Sensitive Environmental Constraint
 - Sensitive Streams
 - Potential Wetlands
 - Missouri Department of Conservation
 - City Limits
 - 100 year Floodplain
 - Missouri Central Railroad
-
- Alternate A (West)
 - Alternate B (East)
 - Connector
 - Usable Existing

Begin Study

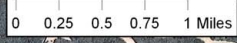
A preferred alternative can be a combination of various points on either the east, west or along existing Route 63.



Westphalia



October 2007



WESTPHALIA SECTION
FREEBURG SECTION